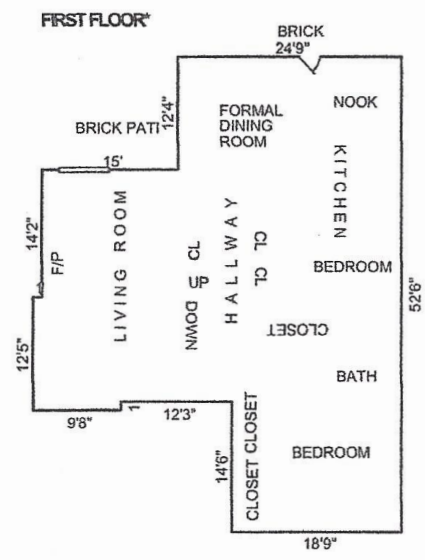


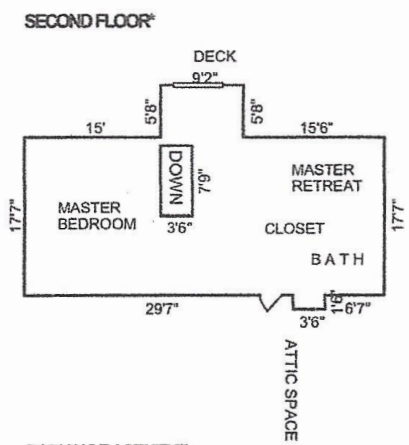
# 5508 Proctor Avenue, Oakland

## Floor Plans



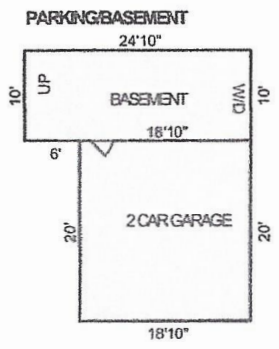
**FIRST FLOOR\***

1	x	12.45	=	12.45
8.70	x	26.65	=	231.86
6.30	x	25.65	=	161.60
6	x	38	=	228
18.75	x	52.5	=	984.38
				<u>Subtotal*</u>
				1618.28 SF
				<u>Total*</u>
				1618.28 SF



**SECOND FLOOR\***

5.70	x	9.20	=	52.44
17.60	x	39.75	=	699.60
1.5	x	3.5	=	5.25
				<u>Less DOWN</u>
3.5	x	7.75	=	27.13 -
				<u>Subtotal*</u>
				730.17 SF
				<u>DOWN</u>
3.5	x	7.75	=	27.13 SF
				<u>Total*</u>
				730.17 SF



**PARKING BASEMENT**

<b>2 CAR GARAGE</b>				
18.90	x	20	=	378 SF
<b>BASEMENT</b>				
10	x	24.90	=	249 SF
<u>Total</u>				
627 SF				
<u>* Total G.I.A.</u>				
2348.44 SF				
<u>Total OTHER</u>				
627 SF				